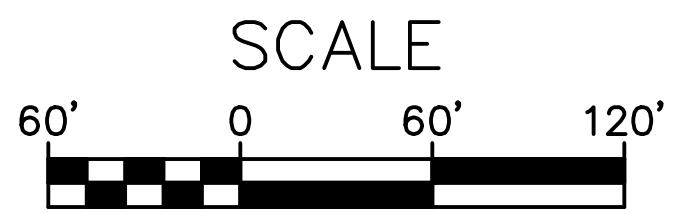
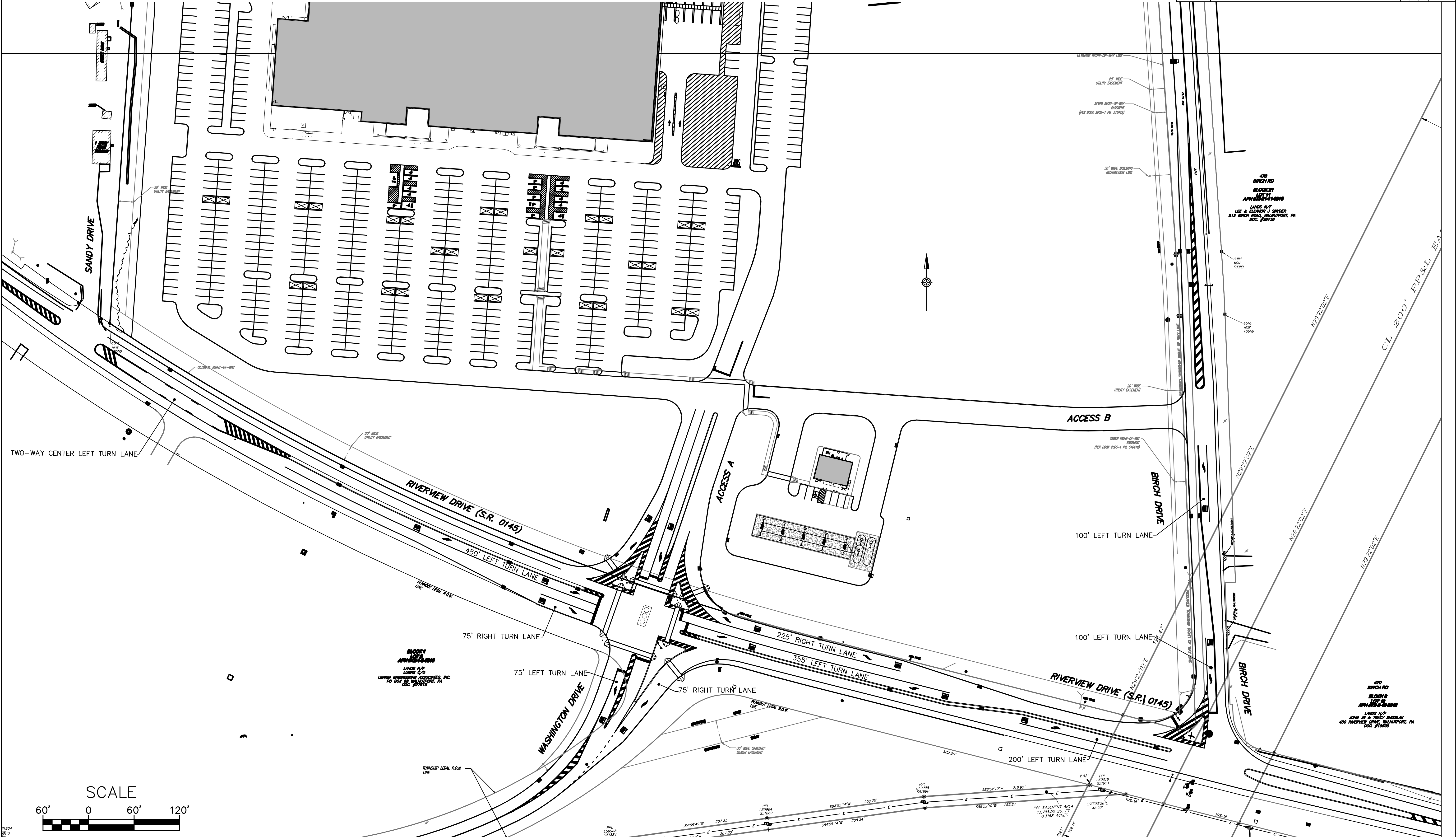


DISTRICT	COUNTY	ROUTE	SECTION	SHEET
5-0	NORTHAMPTON	0145		1 OF 3
LEHIGH TOWNSHIP				
REVISION NUMBER	REVISIONS	DATE	BY	
1	REVISED PER PENNDOT & TOWNSHIP COMMENTS	8/19/16	MJN	
2	REVISED PER PENNDOT & TOWNSHIP COMMENTS	11/11/16	WLT	



425 COMMERCE DRIVE
SUITE 200
FT. WASHINGTON, PA 19034
TELE: (215) 283-9444
FAX: (215) 283-9447

840 W. HAMILTON STREET
SUITE 622
ALLENTOWN, PA 18101
TELE: (610) 628-2994

3903 HARTZDALE DRIVE
SUITE 301
CAMP HILL, PA 17011
TELE: (717) 975-0295
FAX: (717) 975-0294

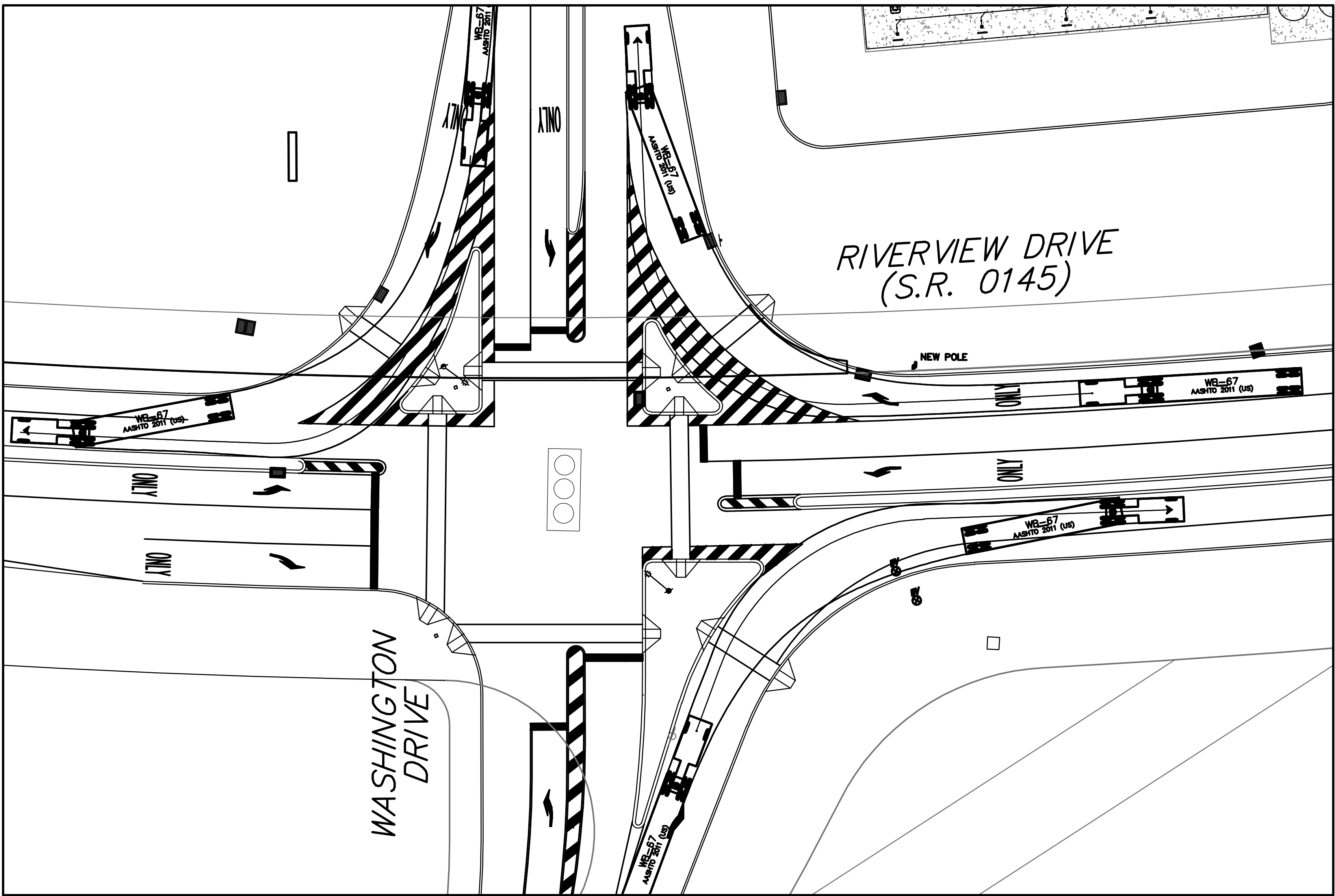
DESIGN BY: DAC
DRAWN BY: DAC
CHECKED BY: DAC
JOB NO: 912250.12
DWG: CONCEPT
DATE: 6/20/16

CLIENT
WAL-MART REAL ESTATE BUSINESS TRUST
2001 SE 10TH STREET
BENTONVILLE, AR 72716
(479) 204-3170

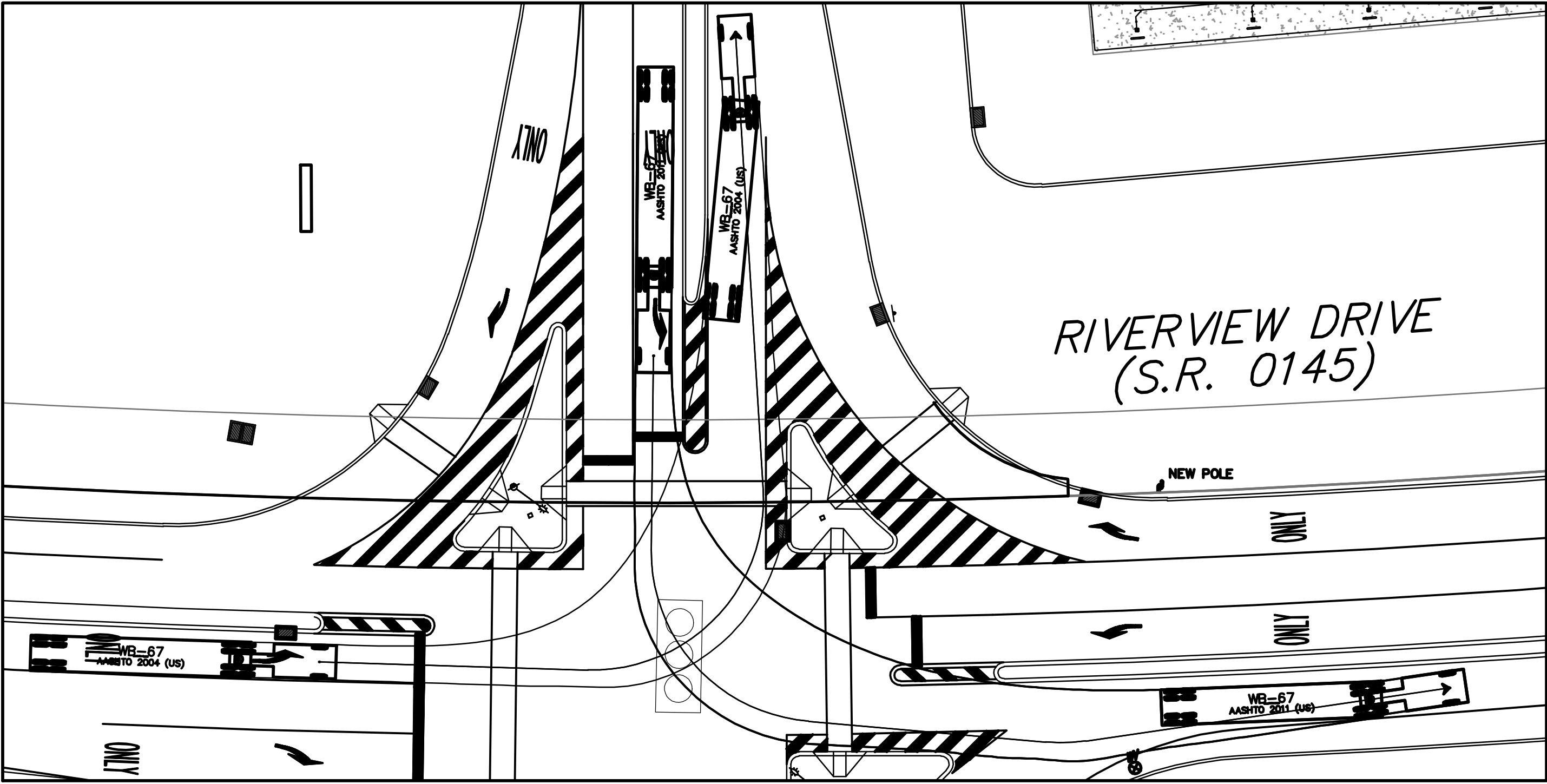
PROPOSED ROADWAY IMPROVEMENT PLAN
RIVERVIEW DRIVE (S.R. 0145) AND WASHINGTON DRIVE
LEHIGH TOWNSHIP
NORTHAMPTON COUNTY

TRUCK TURNING PLAN

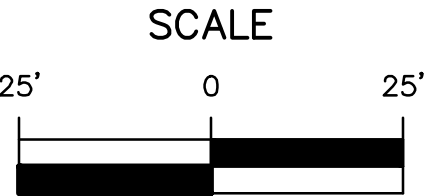
DISTRICT	COUNTY	ROUTE	SECTION	SHEET
5-0	NORTHAMPTON	0145		2 OF 3
LEHIGH TOWNSHIP				
REVISION NUMBER	REVISIONS	DATE	BY	
1	REVISED PER PENNDOT & TOWNSHIP COMMENTS	8/19/16	MJN	
2	REVISED PER PENNDOT & TOWNSHIP COMMENTS	11/11/16	WLT	



WB-67 RIGHT-TURN MOVEMENTS



WB-67 LEFT-TURN MOVEMENTS



425 COMMERCE DRIVE
SUITE 200
FT. WASHINGTON, PA 19034
TELE: (215) 283-9444
FAX: (215) 283-9447

840 W. HAMILTON STREET
SUITE 622
ALLENTOWN, PA 18101
TELE: (610) 628-2994

3903 HARTZDALE DRIVE
SUITE 301
CAMP HILL, PA 17011
TELE: (717) 975-0295
FAX: (717) 975-0294

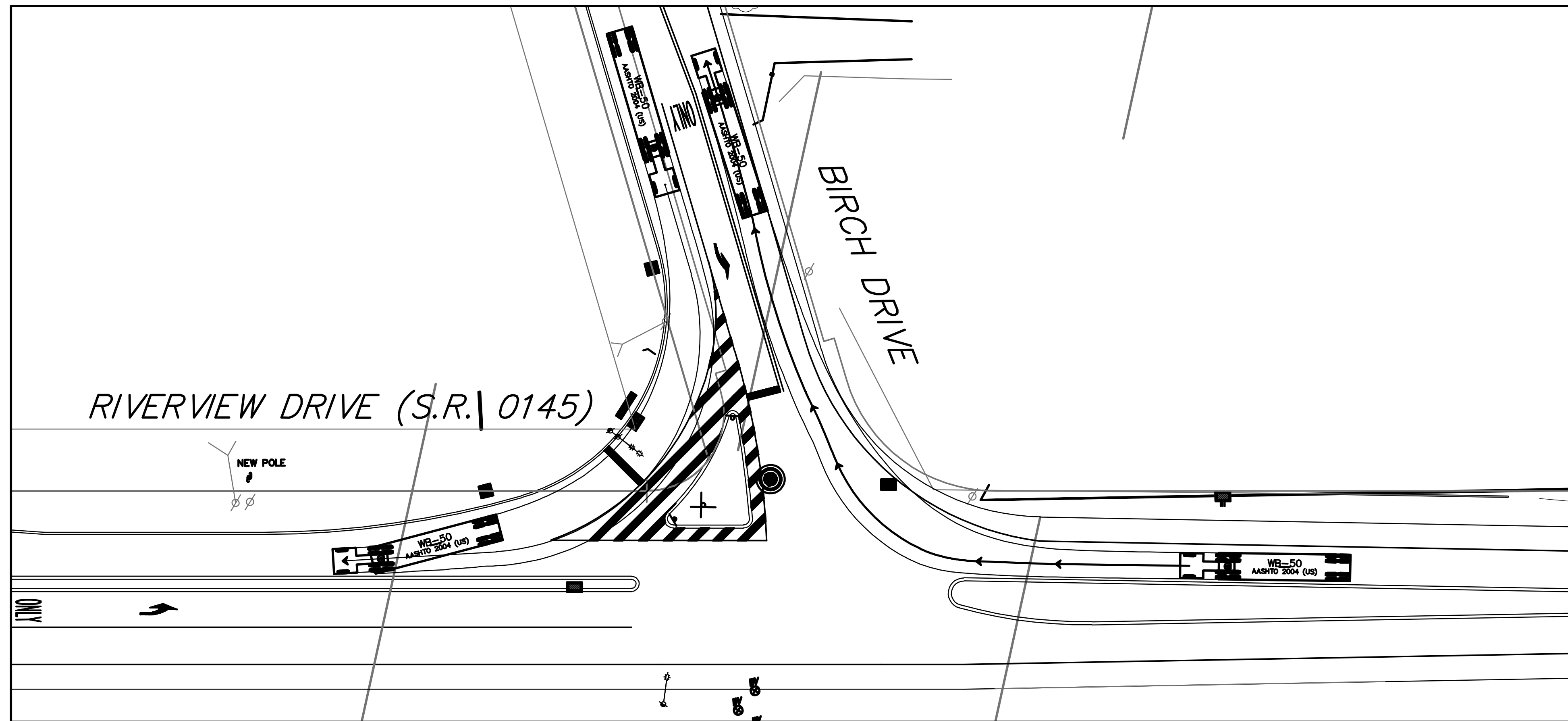
DESIGN BY: DAC
DRAWN BY: DAC
CHECKED BY: DAC
JOB NO: 912250.12
DWG: CONCEPT
DATE: 6/20/16

CLIENT
WAL-MART REAL ESTATE BUSINESS TRUST
2001 SE 10TH STREET
BENTONVILLE, AR 72716
(479) 204-3170

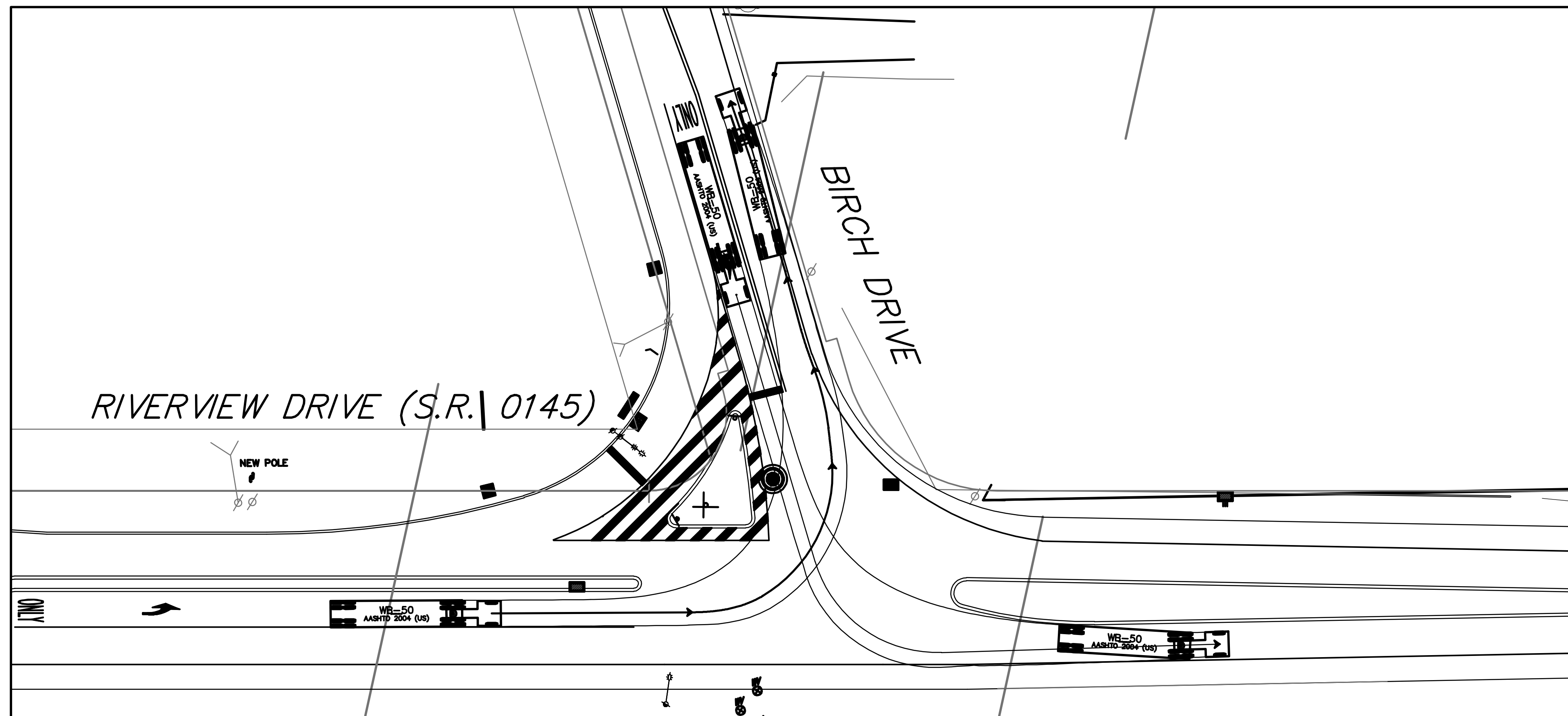
PROPOSED ROADWAY IMPROVEMENT PLAN
RIVERVIEW DRIVE (S.R. 0145) AND WASHINGTON DRIVE
LEHIGH TOWNSHIP NORTHAMPTON COUNTY

TRUCK TURNING PLAN

DISTRICT	COUNTY	ROUTE	SECTION	SHEET
5-0	NORTHAMPTON	0145		3 OF 3
LEHIGH TOWNSHIP				
REVISION NUMBER	REVISIONS	DATE	BY	
1	REVISED PER PENNDOT & TOWNSHIP COMMENTS	8/19/16	MJN	
2	REVISED PER PENNDOT & TOWNSHIP COMMENTS	11/11/16	WLT	



WB-50 RIGHT-TURN MOVEMENTS



WB-50 LEFT-TURN MOVEMENTS

